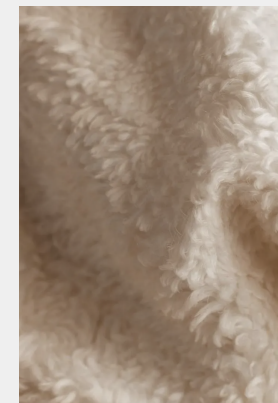


Bio-Fluff

LEC

PRODUCT IN DEVELOPMENT

Bio-Fluff is a plant-based faux fur from nettle, flax, and hemp fibers created through a proprietary plant-derived enzyme process. Bio-Fluff can be used within fashion, interiors, packaging and toys. A natural proprietary flame retardant option is offered for use in interior upholstery.



CATEGORY

Textile, Natural Fiber Blend

MANUFACTURER

Savian

MATERIAL COMPOSITION*

Nettle, Flax, Hemp fiber

**as reported by the manufacturer*

CERTIFICATIONS & DISCLOSURES

- ~~Health Product Declaration (HPD)~~
- ~~Declare Label~~
- ~~Environmental Product Declaration (EPD)~~
- ~~Safety Data Sheet (SDS)~~
- ~~USDA Certified Biobased Product Label~~
- Other

LAST UPDATED

March 29, 2024